

CIRCULAR CURB

NOTES:

1. SHALL BE IN ACCORDANCE WITH SECTION 906 OF THE R.I. STANDARD SPECIFICATIONS.
2. TOP SURFACE TO BE DRESSED BY SAW. REMAINDER MAY BE QUARRY SPLIT.
3. MINIMUM LENGTH OF STRAIGHT OR CIRCULAR PIECES TO BE 3'-0".
4. CIRCULAR CURB IS REQUIRED ON CURVES WITH RADII OF 160'-0" OR LESS. STRAIGHT CURB TO BE USED ON CURVES OF MORE THAN 160'-0" RADIUS.

RHODE ISLAND DEPARTMENT OF TRANSPORTATION

REVISIONS		
NO.	BY	DATE
1	MLP	Mar 2005
2	MLP	Sep 2012

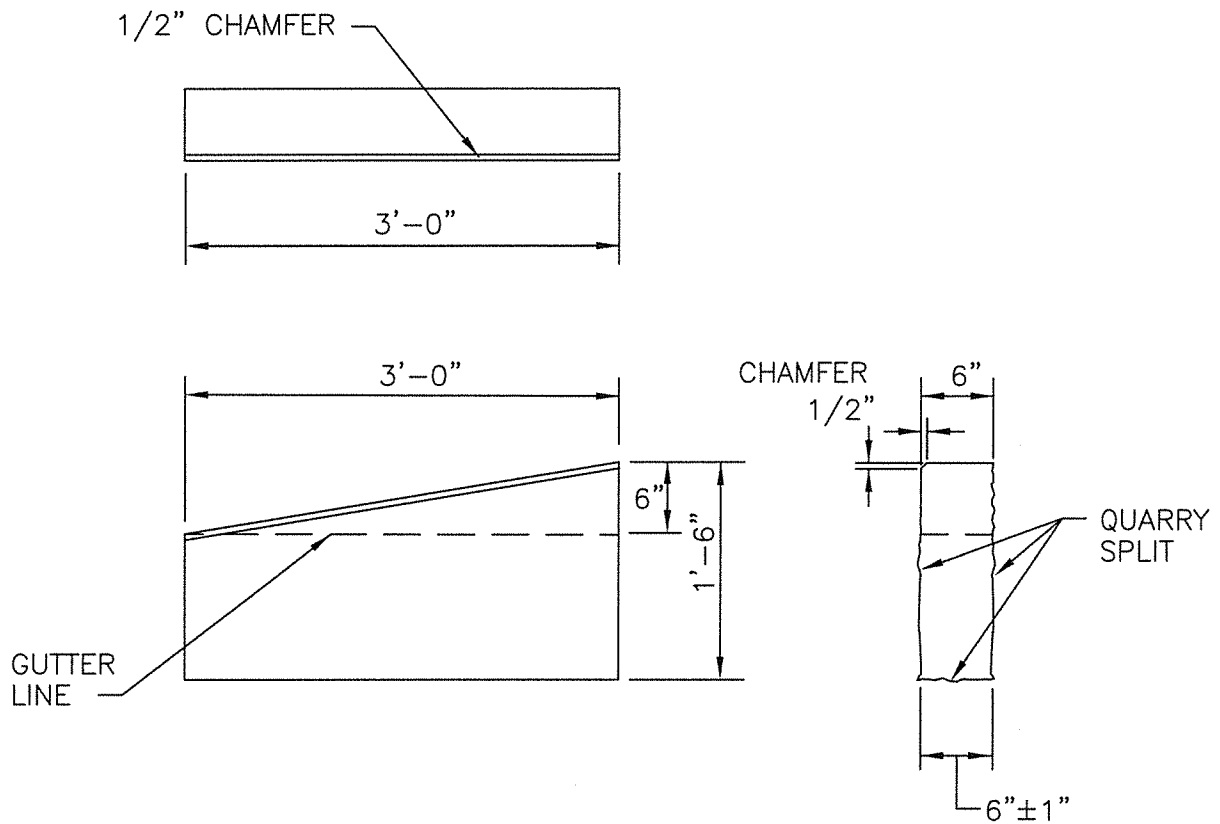
GRANITE CURB

James H. Casale
CHIEF ENGINEER
TRANSPORTATION

Edmund J. Parker
CHIEF DESIGN ENGINEER
TRANSPORTATION

JUNE 15, 1998
ISSUE DATE

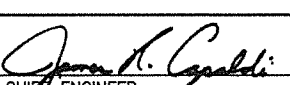
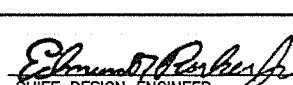


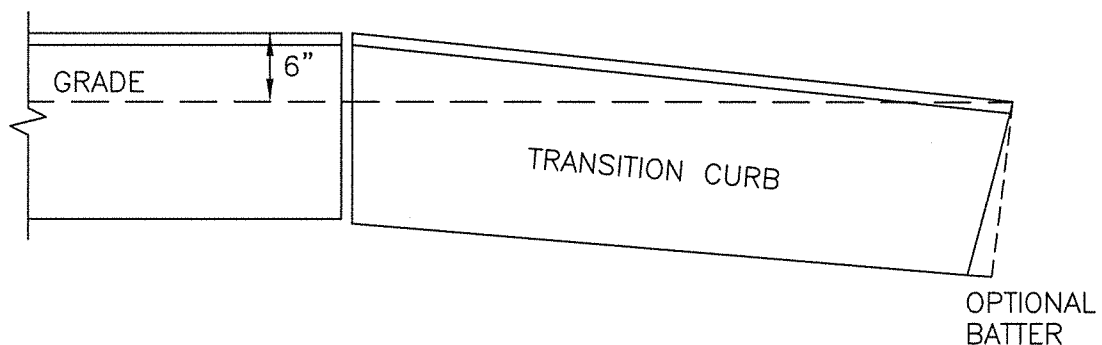
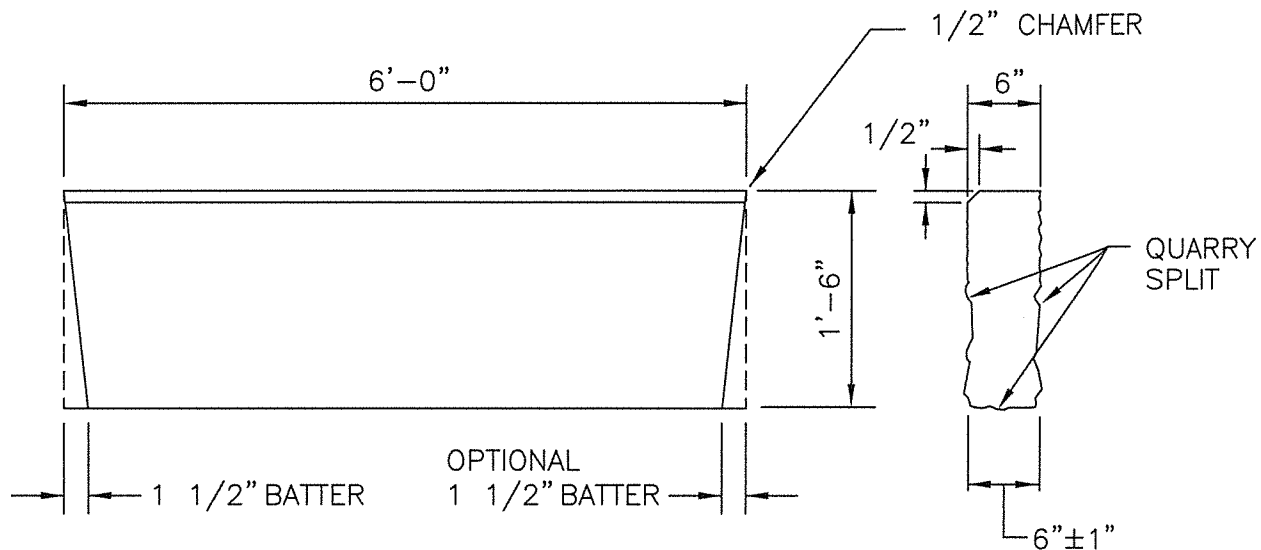


NOTES:

1. SHALL BE IN ACCORDANCE WITH SECTION 906 OF THE R.I. STANDARD SPECIFICATIONS.
2. TOP SURFACE TO BE DRESSED BY SAW. REMAINDER MAY BE QUARRY SPLIT.

RHODE ISLAND DEPARTMENT OF TRANSPORTATION

REVISIONS			3'-0" GRANITE TRANSITION CURB	<div><div>R.I. STANDARD 7.3.1</div></div>
NO.	BY	DATE		
1	MLP	Mar 2005		
2	MLP	Jun 2010		
3	MLP	Sep 2012		
			<div><div><div> CHIEF ENGINEER TRANSPORTATION</div><div> CHIEF DESIGN ENGINEER TRANSPORTATION</div><div>JUNE 15, 1998 ISSUE DATE</div></div></div>	



NOTES:

1. SHALL BE IN ACCORDANCE WITH SECTION 906 OF THE R.I. STANDARD SPECIFICATIONS.
2. THE CONTRACTOR MAY CUT EXISTING CURB SECTIONS AS REQUIRED TO MEET THIS DETAIL AND THE R.I. STANDARD SPECIFICATIONS, WHERE OLD CURBING IS BEING REUSED.
3. TOP SURFACE TO BE DRESSED BY SAW. REMAINDER MAY BE QUARRY SPLIT.

RHODE ISLAND DEPARTMENT OF TRANSPORTATION

REVISIONS		
NO.	BY	DATE
1	MLP	Mar 2005
2	MLP	Sep 2012

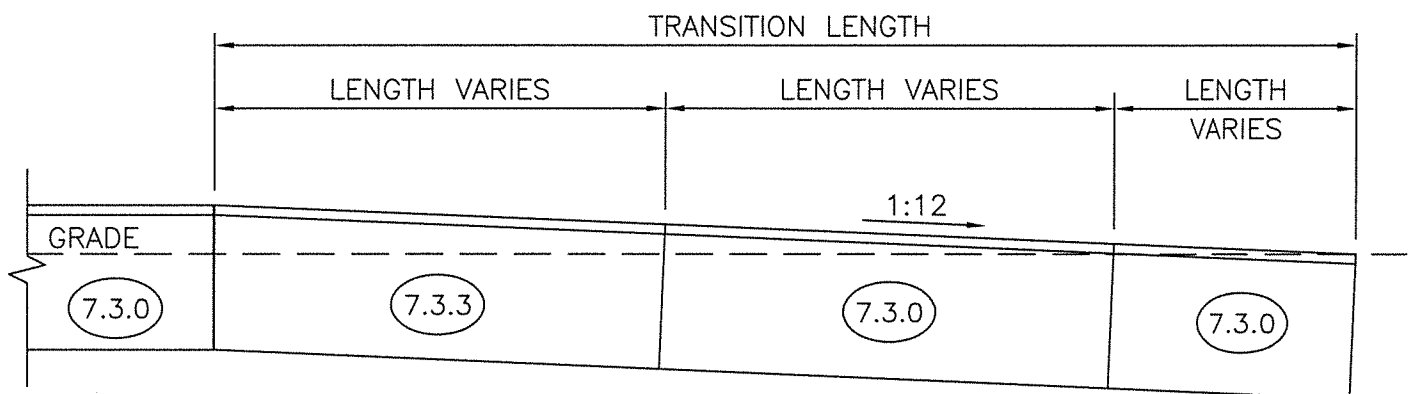
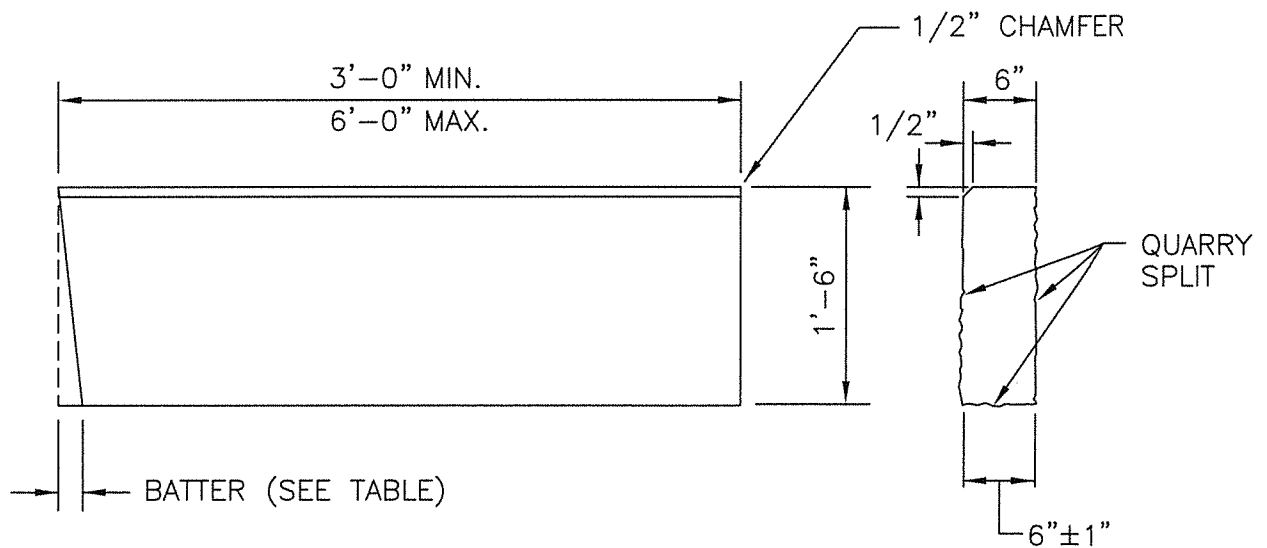
6'-0" GRANITE TRANSITION CURB

James H. Casaldi
CHIEF ENGINEER
TRANSPORTATION

Edmund J. Parker Jr.
CHIEF DESIGN ENGINEER
TRANSPORTATION

JUNE 15, 1998
ISSUE DATE





TRANSITION LENGTH (FT.)	BATTER (IN.)
6.0	1.5
7.0	1.3
8.0	1.2
9.5	1.0
11.5	0.8
15.0	0.6
18.0	0.5

NOTES:

1. SHALL BE IN ACCORDANCE WITH SECTION 906 OF THE R.I. STANDARD SPECIFICATIONS.
2. THE CONTRACTOR MAY CUT EXISTING CURB SECTIONS AS REQUIRED TO MEET THIS DETAIL AND THE R.I. STANDARD SPECIFICATIONS, WHERE OLD CURBING IS BEING REUSED.
3. MINIMUM LENGTH OF STRAIGHT OR CIRCULAR CURB FILLER PIECES TO BE 3'-0" (GREATER LENGTHS PREFERRED).
4. TOP SURFACE TO BE DRESSED BY SAW. REMAINDER MAY BE QUARRY SPLIT.

RHODE ISLAND DEPARTMENT OF TRANSPORTATION

**GRANITE WHEELCHAIR RAMP
TRANSITION CURB**

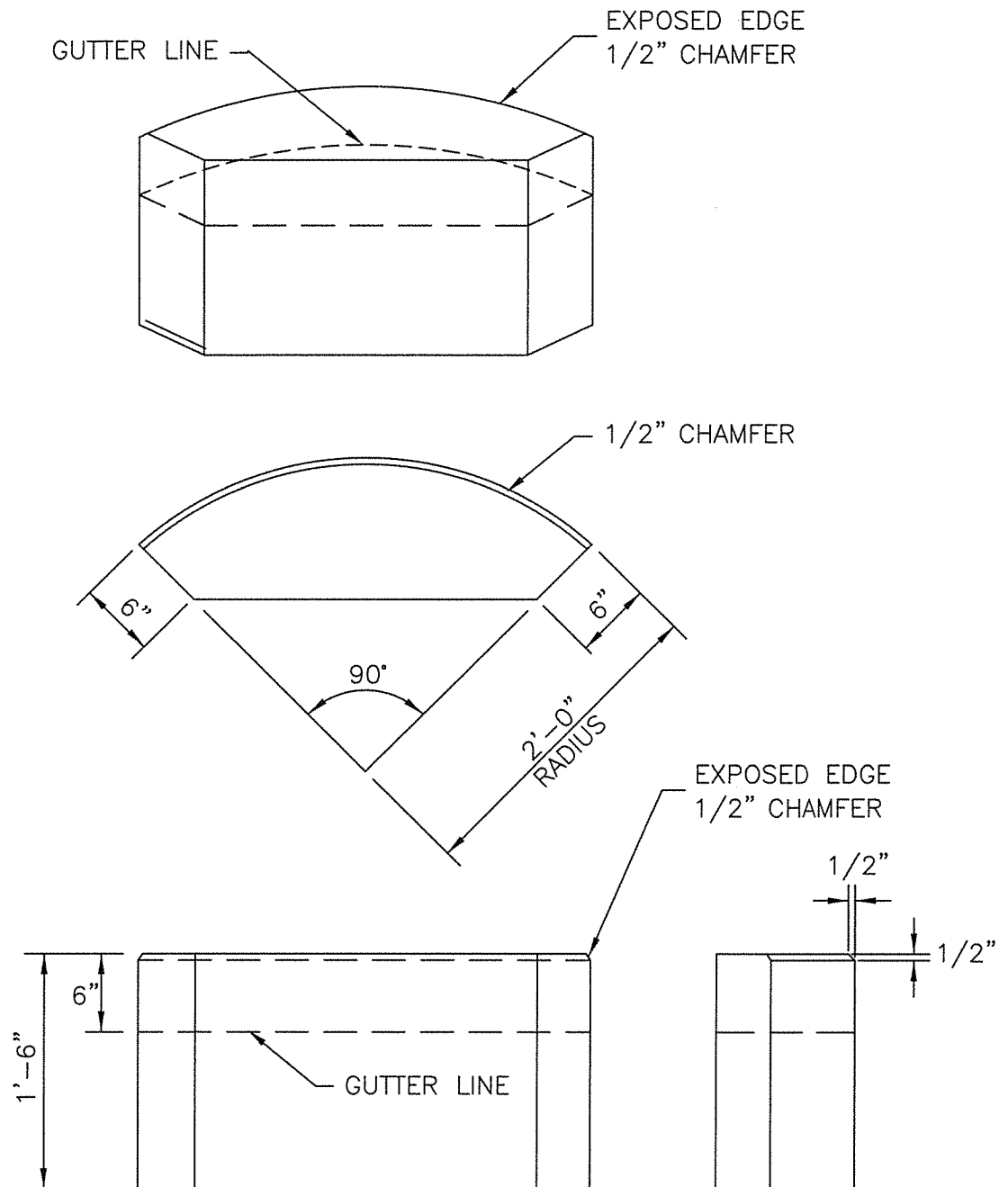
REVISIONS		
NO.	BY	DATE
1	MLP	Mar 2005
2	MLP	Jun 2012

James H. Gagliardi
CHIEF ENGINEER
TRANSPORTATION

Edmund J. Parker Jr.
CHIEF DESIGN ENGINEER
TRANSPORTATION

JUNE 15, 1998
ISSUE DATE





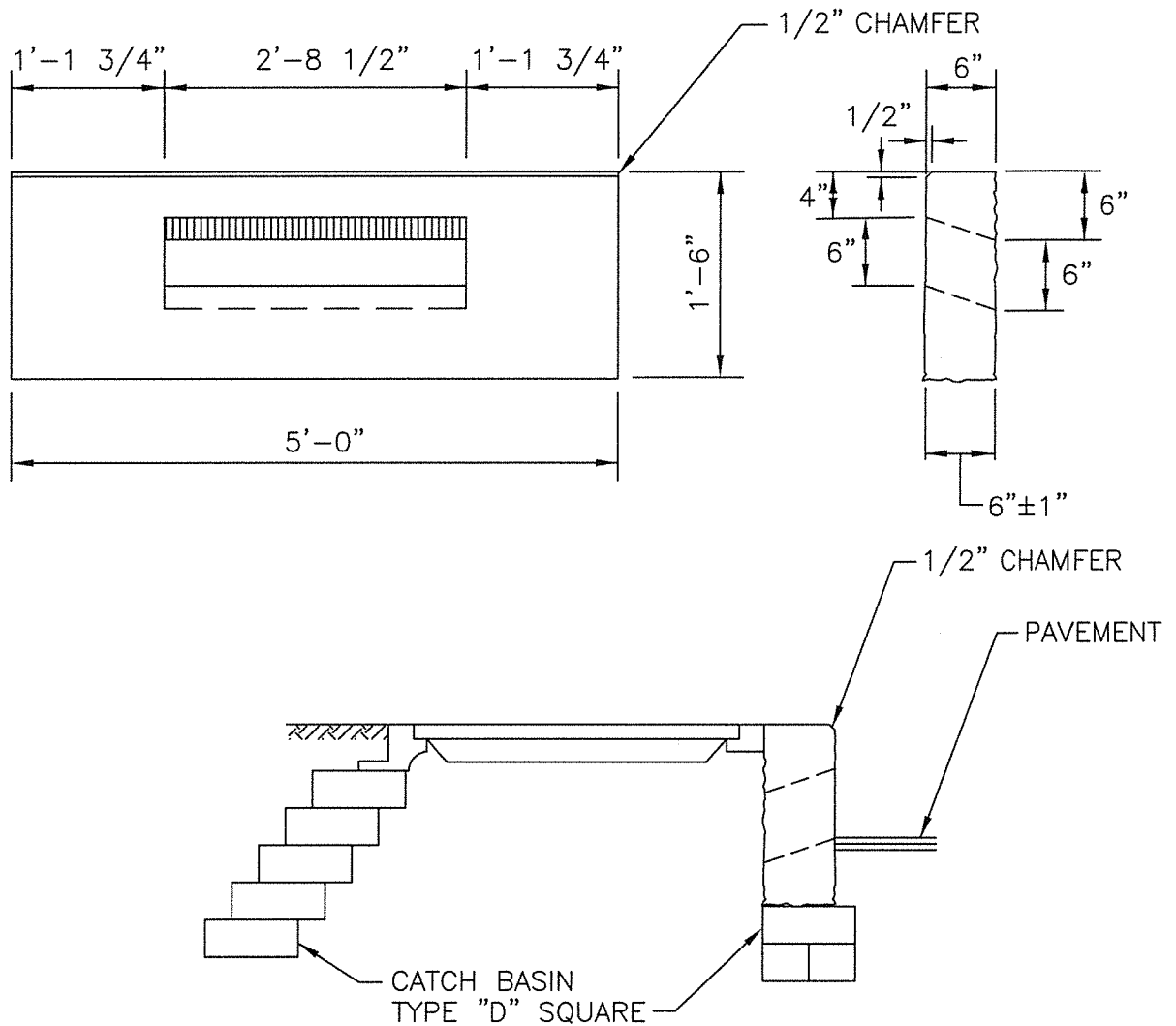


NOTES:

1. SHALL BE IN ACCORDANCE WITH SECTION 906 OF THE R.I. STANDARD SPECIFICATIONS.
2. TOP SURFACE TO BE DRESSED BY SAW. REMAINDER MAY BE QUARRY SPLIT.

RHODE ISLAND DEPARTMENT OF TRANSPORTATION

REVISIONS			GRANITE 2'-0" RADIUS CORNER	<div><div>R.I. STANDARD 7.3.4</div></div>
NO.	BY	DATE		
1	MLP	Mar 2005		
2	MLP	Sep 2012		
			<div><div> CHIEF ENGINEER TRANSPORTATION</div><div> CHIEF DESIGN ENGINEER TRANSPORTATION</div><div>JUNE 15, 1998 ISSUE DATE</div></div>	



NOTES:

1. SHALL BE IN ACCORDANCE WITH SECTION 906 OF THE R.I. STANDARD SPECIFICATIONS.
2. TOP SURFACE TO BE DRESSED BY SAW. REMAINDER MAY BE QUARRY SPLIT.

RHODE ISLAND DEPARTMENT OF TRANSPORTATION

REVISIONS		
NO.	BY	DATE
1	MLP	Mar 2005
2	MLP	Sep 2012

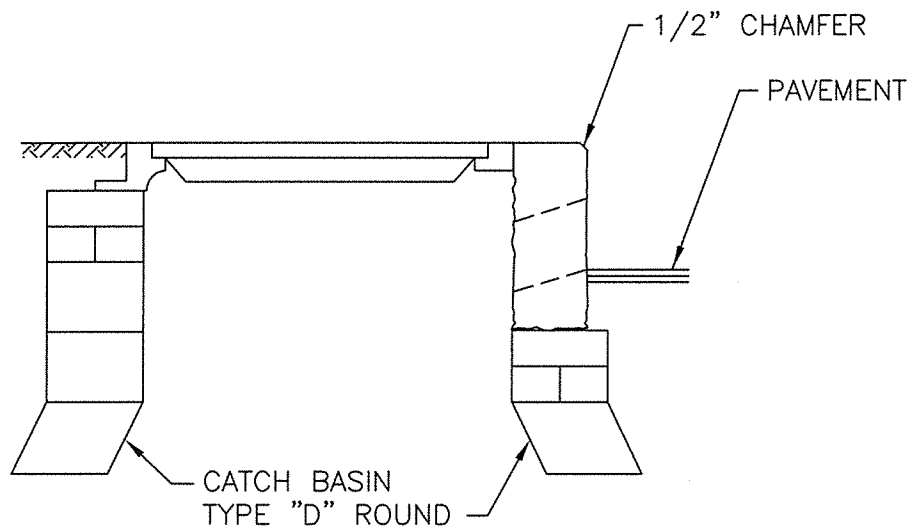
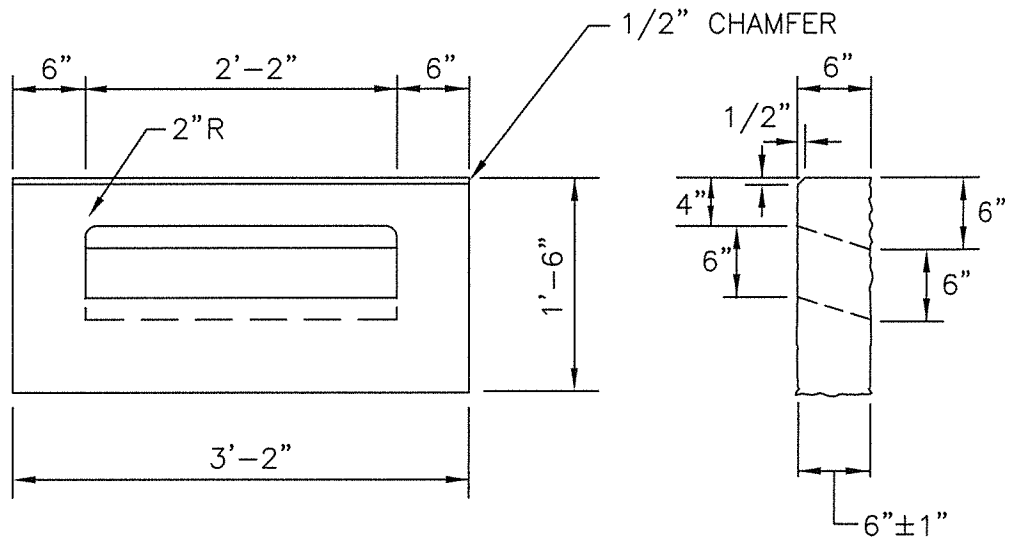
**GRANITE INLET STONE
(FOR SQUARE CATCH BASIN)**

James A. Capaldi
CHIEF ENGINEER
TRANSPORTATION

Edmund J. Parker Jr.
CHIEF DESIGN ENGINEER
TRANSPORTATION

JUNE 15, 1998
ISSUE DATE





NOTES:

1. SHALL BE IN ACCORDANCE WITH SECTION 906 OF THE R.I. STANDARD SPECIFICATIONS.
2. TOP SURFACE TO BE DRESSED BY SAW. REMAINDER MAY BE QUARRY SPLIT.

RHODE ISLAND DEPARTMENT OF TRANSPORTATION

REVISIONS		
NO.	BY	DATE
1	MLP	Mar 2005
2	MLP	Sep 2012

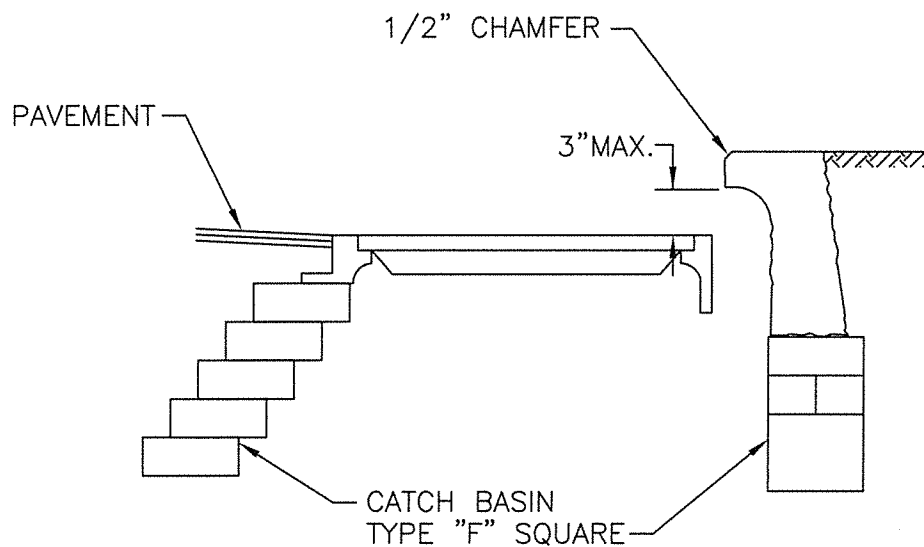
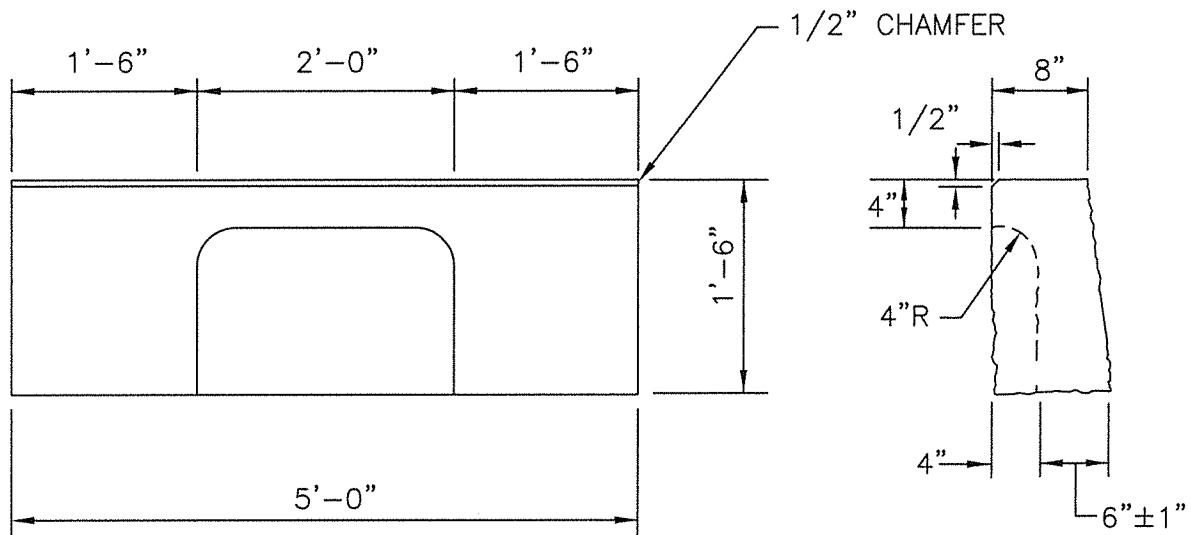
**GRANITE INLET STONE
(FOR ROUND CATCH BASIN)**

CHIEF ENGINEER
TRANSPORTATION

CHIEF DESIGN ENGINEER
TRANSPORTATION

JUNE 15, 1998
ISSUE DATE

R.I.
STANDARD
7.3.6



NOTES:

1. SHALL BE IN ACCORDANCE WITH SECTION 906 OF THE R.I. STANDARD SPECIFICATIONS.
2. TOP SURFACE TO BE DRESSED BY SAW. REMAINDER MAY BE QUARRY SPLIT.

RHODE ISLAND DEPARTMENT OF TRANSPORTATION

**GRANITE APRON STONE
(FOR SQUARE CATCH BASIN)**

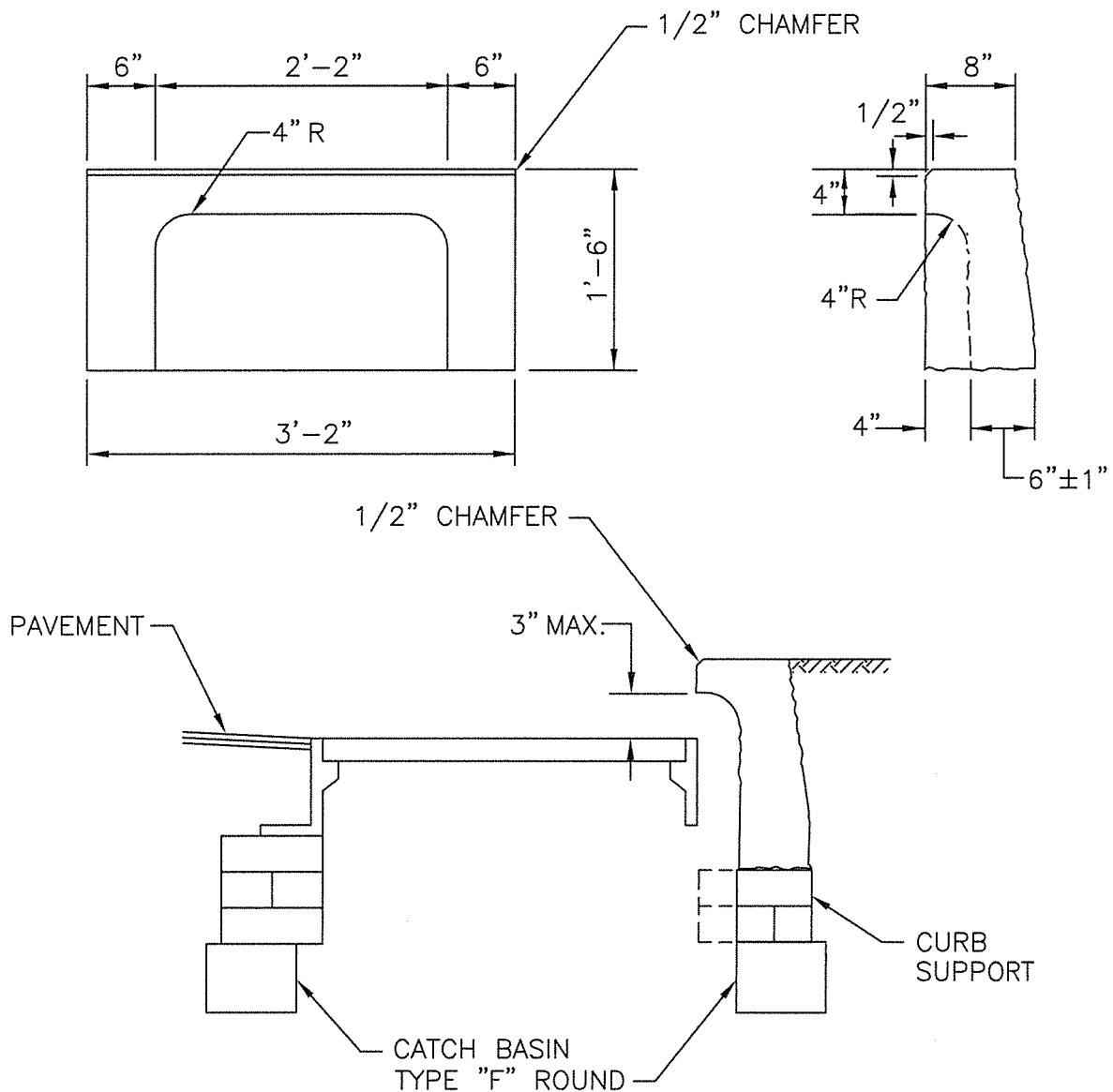
REVISIONS		
NO.	BY	DATE
1	MLP	Mar 2005
2	MLP	Sep 2012

James R. Capaldi
CHIEF ENGINEER
TRANSPORTATION

Edmund J. Parker Jr.
CHIEF DESIGN ENGINEER
TRANSPORTATION

JUNE 15, 1998
ISSUE DATE





NOTES:

1. SHALL BE IN ACCORDANCE WITH SECTION 906 OF THE R.I. STANDARD SPECIFICATIONS.
2. TOP SURFACE TO BE DRESSED BY SAW. REMAINDER MAY BE QUARRY SPLIT.

RHODE ISLAND DEPARTMENT OF TRANSPORTATION

**GRANITE APRON STONE
(FOR ROUND CATCH BASIN)**

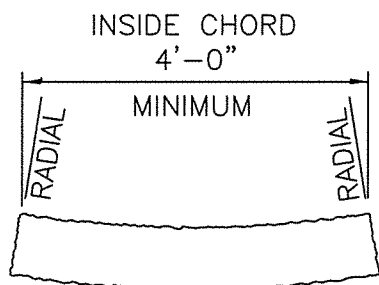
REVISIONS		
NO.	BY	DATE
1	MLP	Mar 2005
2	MLP	Sep 2012

James A. Casale
CHIEF ENGINEER
TRANSPORTATION

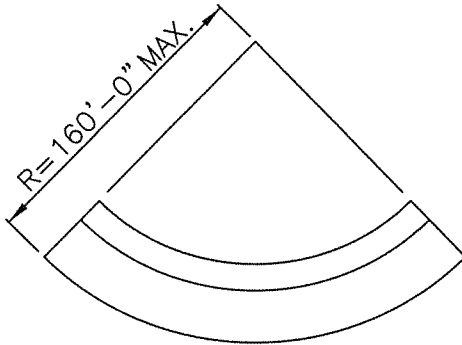
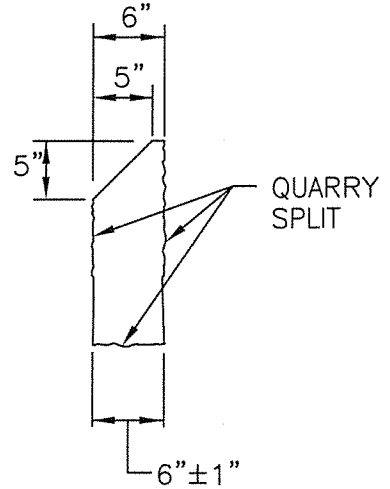
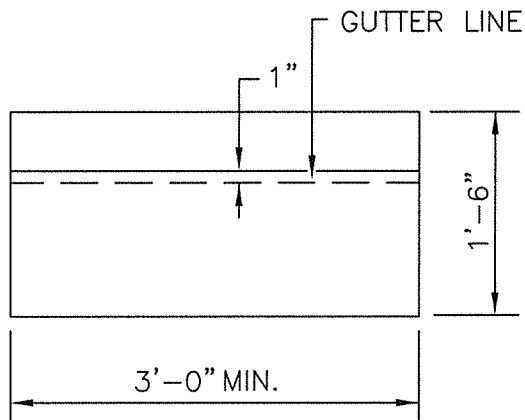
Edmund J. Parker
CHIEF DESIGN ENGINEER
TRANSPORTATION

JUNE 15, 1998
ISSUE DATE





R.I.
STANDARD
7.3.9



CIRCULAR CURB

NOTES:

1. SHALL BE IN ACCORDANCE WITH SECTION 906 OF THE R.I. STANDARD SPECIFICATIONS.
2. TOP SURFACE AND SLOPED SURFACE TO BE DRESSED BY SAW. REMAINDER TO BE QUARRY SPLIT.
3. MINIMUM LENGTH OF STRAIGHT OR CIRCULAR PIECES TO BE 3'-0".
4. CIRCULAR CURB IS REQUIRED ON CURVES WITH RADII OF 160'-0" OR LESS. STRAIGHT CURB TO BE USED ON CURVES OF MORE THAN 160'-0" RADIUS.

RHODE ISLAND DEPARTMENT OF TRANSPORTATION

REVISIONS		
NO.	BY	DATE
1	MLP	Mar 05

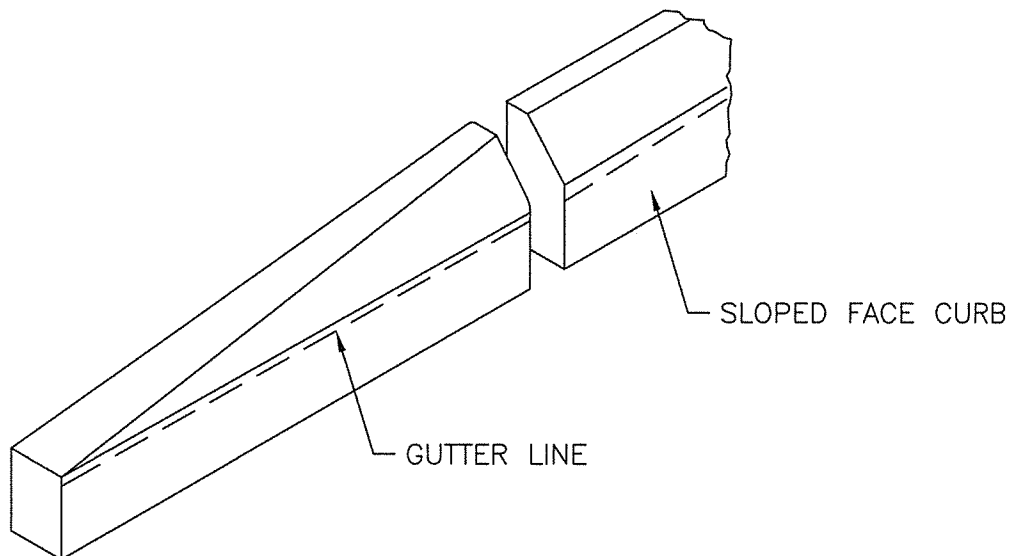
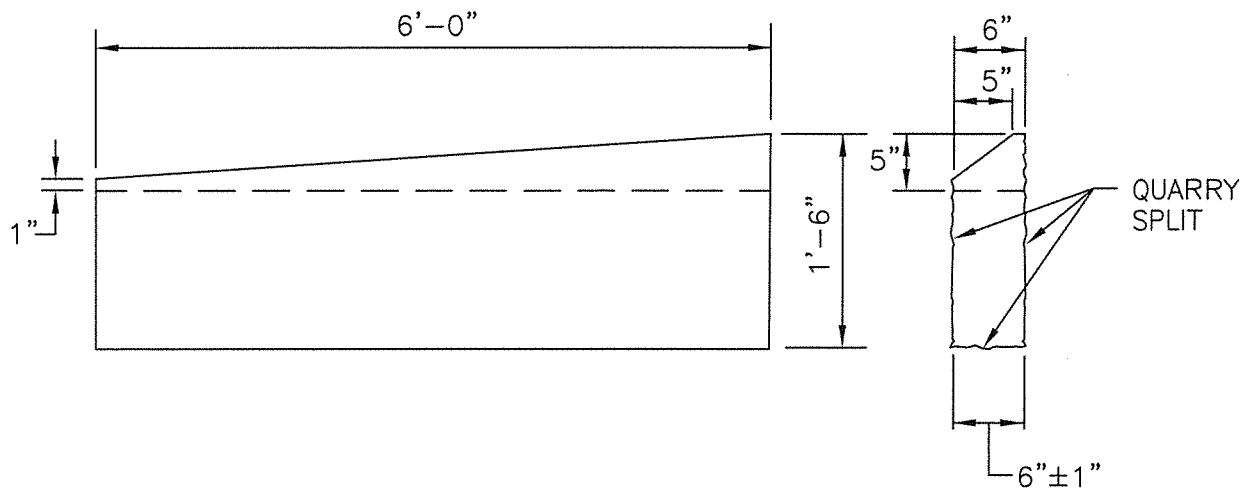
GRANITE SLOPED FACE CURB

James A. Capaldi
CHIEF ENGINEER
TRANSPORTATION

Edmund J. Parker Jr.
CHIEF DESIGN ENGINEER
TRANSPORTATION

JUNE 15, 1998
ISSUE DATE







NOTES:

1. SHALL BE IN ACCORDANCE WITH SECTION 906 OF THE R.I. STANDARD SPECIFICATIONS.
2. TOP SURFACE AND SLOPED SURFACE TO BE DRESSED BY SAW. REMAINDER TO BE QUARRY SPLIT.
3. DRAWING SHOWS TRANSITION CURB FOR ONE DIRECTION. FOR OTHER DIRECTION USE OPPOSITE HAND.

RHODE ISLAND DEPARTMENT OF TRANSPORTATION

REVISIONS			GRANITE SLOPED FACE TRANSITION CURB	<div><div>R.I. STANDARD 7.4.1</div></div>
NO.	BY	DATE		
1	MLP	Mar 05		
			<div><div> CHIEF ENGINEER TRANSPORTATION</div><div> CHIEF DESIGN ENGINEER TRANSPORTATION</div><div>JUNE 15, 1998 ISSUE DATE</div></div>	

James A. Casaldi
CHIEF ENGINEER
TRANSPORTATION

Edmund J. Parker
CHIEF DESIGN ENGINEER
TRANSPORTATION

JUNE 15, 1998
ISSUE DATE

STANDARD CURB SECTIONS
OR WHEELCHAIR RAMP
TRANSITION CURB AS REQUIRED
CURB

TRANSITION LENGTH
T

TYPICAL CROSSWALK
APPLICATION ACROSS
SIDE STREET (EXACT
LOCATION TO BE
SHOWN ON PLANS)

43.1.0 or 43.2.0
SIDEWALK

A

43.1.0 RAMP
1:50 MAX.
1:12 MAX.

4'-0" MIN.
1:50 MAX.

LANDING
1:50 MAX.

A

STATE HIGHWAY LINE

DIRECTION OF PEDESTRIAN TRAVEL

CURB OR TRANSITIONS
AS REQUIRED
FOR EARTH SUPPORT

AS REQUIRED
TRANSITION
6'-0"

ROADWAY ROADWAY GRADE	T
0.00	6.0
0.01	7.0
0.02	8.0
0.03	9.5
0.04	11.5
0.05	15.0

PLAN

NORMAL SIDEWALK
GRADE

STD. 43.1.0 or 43.2.0

GRAVEL BORROW

RAMP
VARIES
6'-0" MINIMUM

LANDING
VARIES

1:12 MAX.

1:50 MAX.

SIDE STREET
CROSS-SLOPE

SECTION A-A

CONCRETE SIDEWALK AND LANDING

NOTES:

1. SHALL BE IN ACCORDANCE WITH SECTION 905 OF THE R.I. STANDARD SPECIFICATIONS.
2. THIS DETAIL IS TO BE USED ONLY WHEN STATE RIGHT-OF-WAY IS LIMITED TO BACK OF SIDEWALK, AND SIDEWALK IS NARROW WITH NO PEDESTRIAN TRAFFIC FROM SIDE STREET.
3. WHEN ANY OBSTRUCTION LOCATED IN THE SIDEWALK FALLS WITHIN A CROSSWALK AREA, IF POSSIBLE, THE OBSTRUCTION SHALL BE PLACED SUCH THAT IT FALLS OUTSIDE OF THE RAMP.
4. AT NO TIME IS ANY PART OF THE WHEELCHAIR RAMP TO BE LOCATED OUTSIDE OF THE CROSSWALK, AND IT IS TO BE CENTERED WHENEVER POSSIBLE.
5. DRAINAGE FACILITIES ARE TO BE LOCATED UP-GRADE OF ALL WHEELCHAIR RAMPS.
6. LOCATION OF WHEELCHAIR RAMPS IS AS SHOWN ON CONTRACT DRAWINGS.
7. ALL REQUIRED CUTTING OF CURB PIECES TO BE PAID FOR UNDER COST OF CURB.
8. WHERE THE ROAD PROFILE EXCEEDS 5% THE TRANSITION LENGTH (T) SHALL BE EIGHTEEN FEET (18'-0").
9. THE ENTRANCE OF THE WHEELCHAIR RAMP SHALL BE FLUSH WITH THE ROADWAY.
10. MINIMUM LENGTH OF STRAIGHT OR CIRCULAR FILLER PIECES TO BE 3'-0" (GREATER LENGTHS PREFERRED).
11. AN UNOBSTRUCTED PATH OF TRAVEL WITH A MINIMUM WIDTH OF 4'-0" SHALL BE MAINTAINED.

RHODE ISLAND DEPARTMENT OF TRANSPORTATION

WHEELCHAIR RAMP FOR LIMITED RIGHT-OF-WAY AREAS

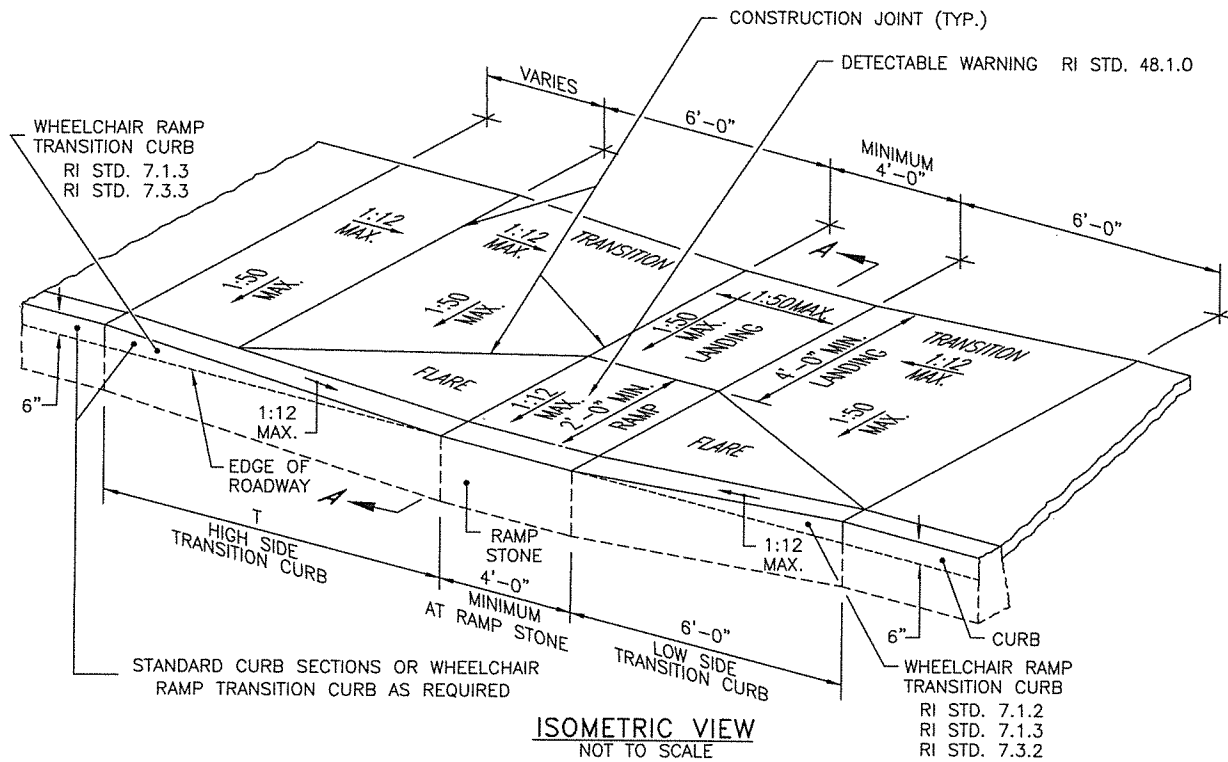
REVISIONS		
NO.	BY	DATE
1	MLP	Dec 2005
2	MLP	Sep 2012

James A. Capaldi
CHIEF ENGINEER
TRANSPORTATION

Edmund J. Parker Jr.
CHIEF DESIGN ENGINEER
TRANSPORTATION

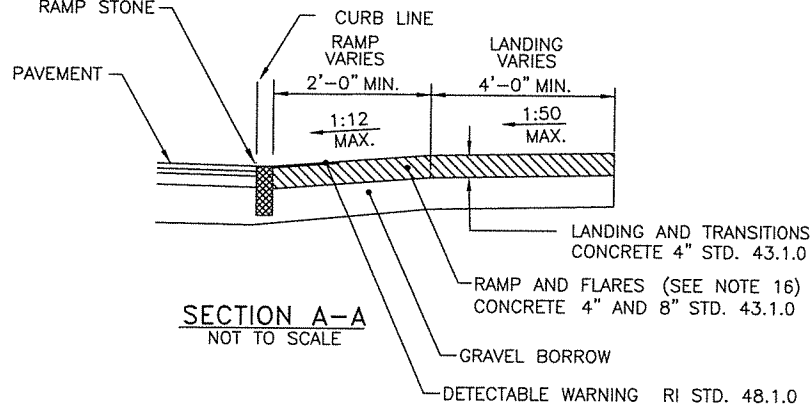
JUNE 15, 1998
ISSUE DATE





GRANITE STD. 7.3.9
PCC STD. 7.1.9
RAMP STONE

ROADWAY PROFILE GRADE	T (FT.)
0.00	6.0
0.01	7.0
0.02	8.0
0.03	9.5
0.04	11.5
0.05	15.0



NOTES:

1. SHALL BE IN ACCORDANCE WITH SECTION 905 OF THE RI STANDARD SPECIFICATIONS.
2. WHEN ANY OBSTRUCTION LOCATED IN THE SIDEWALK FALLS WITHIN A CROSSWALK AREA, THE WHEELCHAIR RAMP SHALL BE PLACED SUCH THAT THE OBSTRUCTION FALLS OUTSIDE OF THE RAMP.
3. AT NO TIME IS ANY PART OF THE WHEELCHAIR RAMP TO BE LOCATED OUTSIDE OF THE CROSSWALK, AND IT IS TO BE CENTERED WHENEVER POSSIBLE.
4. DRAINAGE FACILITIES ARE TO BE LOCATED UP-GRADE OF ALL WHEELCHAIR RAMPS.
5. LOCATION OF WHEELCHAIR RAMPS IS AS SHOWN ON CONTRACT DRAWINGS.
6. IN NO INSTANCE SHALL THE SIDEWALK CROSS SLOPE EXCEED 1:50 EXCEPT WITHIN THE RAMP AREA.
7. AN UNOBSTRUCTED PATH OF TRAVEL WITH A MINIMUM WIDTH OF 4'-0" SHALL BE MAINTAINED.
8. THE WHEELCHAIR RAMP SLOPE AND SIDE SLOPES (TRANSITIONS), MUST NOT BE STEEPER THAN 1:12. HOWEVER, THESE SLOPES MAY BE FLATTER THAN 1:12 WHEN WARRANTED BY SURROUNDING CONDITIONS.
9. WHERE THE ROAD PROFILE EXCEEDS 5% THE HIGH SIDE TRANSITION LENGTH (T) SHALL BE EIGHTEEN FEET (18'-0").
10. IN NO CASE, WHERE A STOP LINE IS WARRANTED, SHALL A RAMP BE PLACED BEHIND THE STOP LINE.
11. THE ENTRANCE OF THE WHEELCHAIR RAMP SHALL BE FLUSH WITH THE ROADWAY.
12. THE WHEELCHAIR RAMP SHALL BE CENTERED RADIALLY, OPPOSITE THE RADIUS POINT WHEN POSSIBLE.
13. MINIMUM LENGTH OF STRAIGHT OR CIRCULAR FILLER PIECES TO BE 3'-0" (GREATER LENGTHS PREFERRED).
14. ALL REQUIRED CUTTING OF CURB PIECES TO BE PAID FOR UNDER COST OF CURB.
15. DETECTABLE WARNINGS TO BE PAID FOR UNDER SECTION 942 OF THE RI STANDARD SPECIFICATIONS
16. 8" CONCRETE DEPTH FOR RADIUS WHEELCHAIR RAMPS ONLY. USE 4" DEPTH FOR TANGENT (MID-BLOCK) LOCATIONS.

RHODE ISLAND DEPARTMENT OF TRANSPORTATION

WHEELCHAIR RAMP

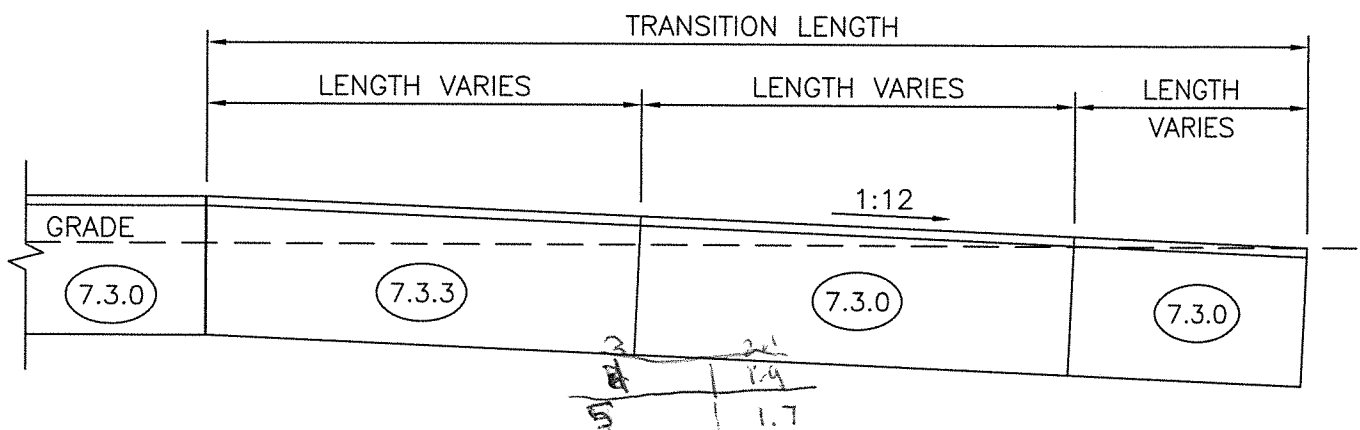
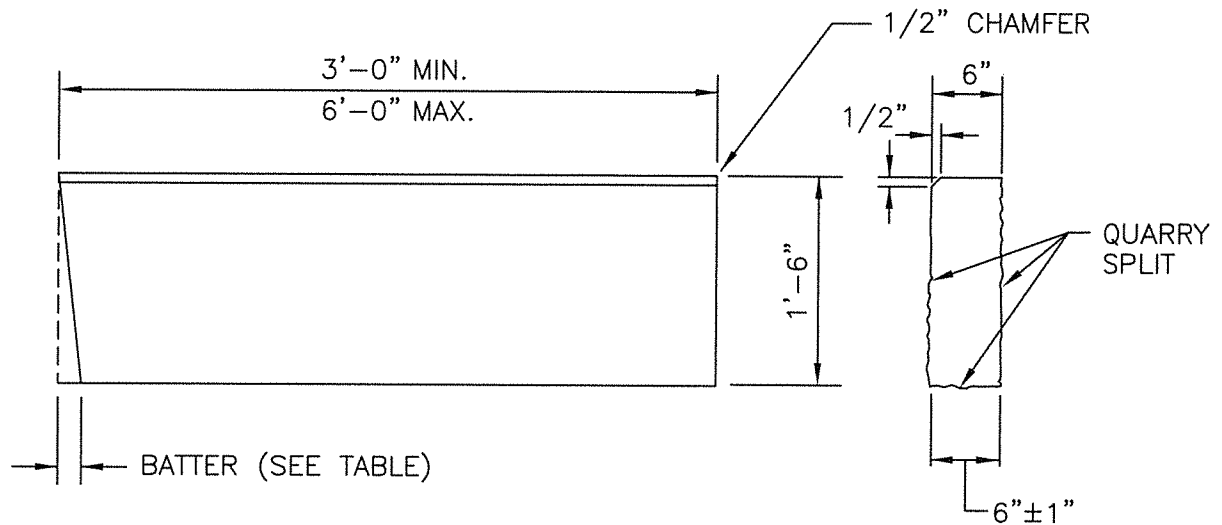
REVISIONS		
NO.	BY	DATE
1	MLP	Oct 2005
2	MLP	Jun 2008
3	MLP	Sep 2012

James P. Capaldi
CHIEF ENGINEER
TRANSPORTATION

CHIEF DESIGN ENGINEER
TRANSPORTATION

JUNE 15, 1998
ISSUE DATE





TRANSITION LENGTH (FT.)	BATTER (IN.)
6.0	1.5
7.0	1.3
8.0	1.2
9.5	1.0
11.5	0.8
15.0	0.6
18.0	0.5

NOTES:

1. SHALL BE IN ACCORDANCE WITH SECTION 906 OF THE R.I. STANDARD SPECIFICATIONS.
2. THE CONTRACTOR MAY CUT EXISTING CURB SECTIONS AS REQUIRED TO MEET THIS DETAIL AND THE R.I. STANDARD SPECIFICATIONS, WHERE OLD CURBING IS BEING REUSED.
3. MINIMUM LENGTH OF STRAIGHT OR CIRCULAR CURB FILLER PIECES TO BE 3'-0" (GREATER LENGTHS PREFERRED).
4. TOP SURFACE TO BE DRESSED BY SAW. REMAINDER MAY BE QUARRY SPLIT.

RHODE ISLAND DEPARTMENT OF TRANSPORTATION

GRANITE WHEELCHAIR RAMP TRANSITION CURB

REVISIONS		
NO.	BY	DATE
1	MLP	Mar 2005
2	MLP	Jun 2012

James A. Capaldi
CHIEF ENGINEER
TRANSPORTATION

Edmund J. Parker Jr.
CHIEF DESIGN ENGINEER
TRANSPORTATION

JUNE 15, 1998
ISSUE DATE

